

The Omnichord was created in 1981 with the aim of being an electronic instrument similar to an autoharp. It quickly became very popular, especially in Europe and America as a new musical instrument that anyone can enjoy, anytime, anywhere. In addition, the unique electronic sounds that are reminiscent of the 80's, and the musical expressions that can only be achieved with an Omnichord, have attracted many musicians, producers, and song writers. It not only appears in music, but also publicity photos, and has featured in the titles of songs and albums. Even when the last model bearing the Omnichord name was discontinued, its popularity remained undiminished, and in response to customer demand, Suzuki decided to release the OM-108.



Make Your Own Kind of Music

Omnichord OM-108

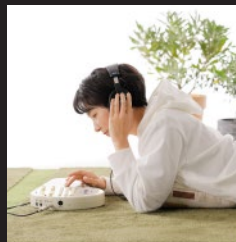
Immediate accompaniment possible with simple playing techniques.

Omnichord is an electronic musical instrument with an automatic accompaniment function (auto bass chord) and is equipped with a harp sensor (strumplate). Simply press the chord button and slide your finger on the strumplate. It's as simple as that! With very little practice, you can play accompaniment to a song almost instantly.

Play anytime, anywhere.

Although it has a built-in speaker, the Omnichord is small, lightweight, and battery-powered*, making it easy to carry and play. Connect an external amplifier and headphones and you can perform anywhere! Perfect for when you're practicing in the studio, performing at a live venue, or just playing a favorite song in your bedroom.

*Powered by 8, AA batteries or dedicated AC adapter (both sold separately)



For those with zero musical experience and professional musicians.

The OM-108 does not have a display like many electronic musical instruments, and the settings made using the buttons and knobs will sound as they are. It is an interface that is intuitive and easy to understand for those with no experience with musical instruments. At the same time, these tactile controls allow professional musicians and song writers to perform and compose in real time, while creating sounds on the panel. It can be used like a keyboard or rhythm machine, and you can also expand the tones with MIDI OUT. The attractiveness of an Omnichord is that whatever your ability or interest, you can make your own kind of music!

Optional items that make playing on the move more convenient.

AC adapter 100-240V

- AD1-1210A (100-120V)
- AD3-1210A (220-240V)

*The AC adapter designed for earlier Omnichords cannot be used with OM-108.



Gig bag Fabric: polyester OGB-108

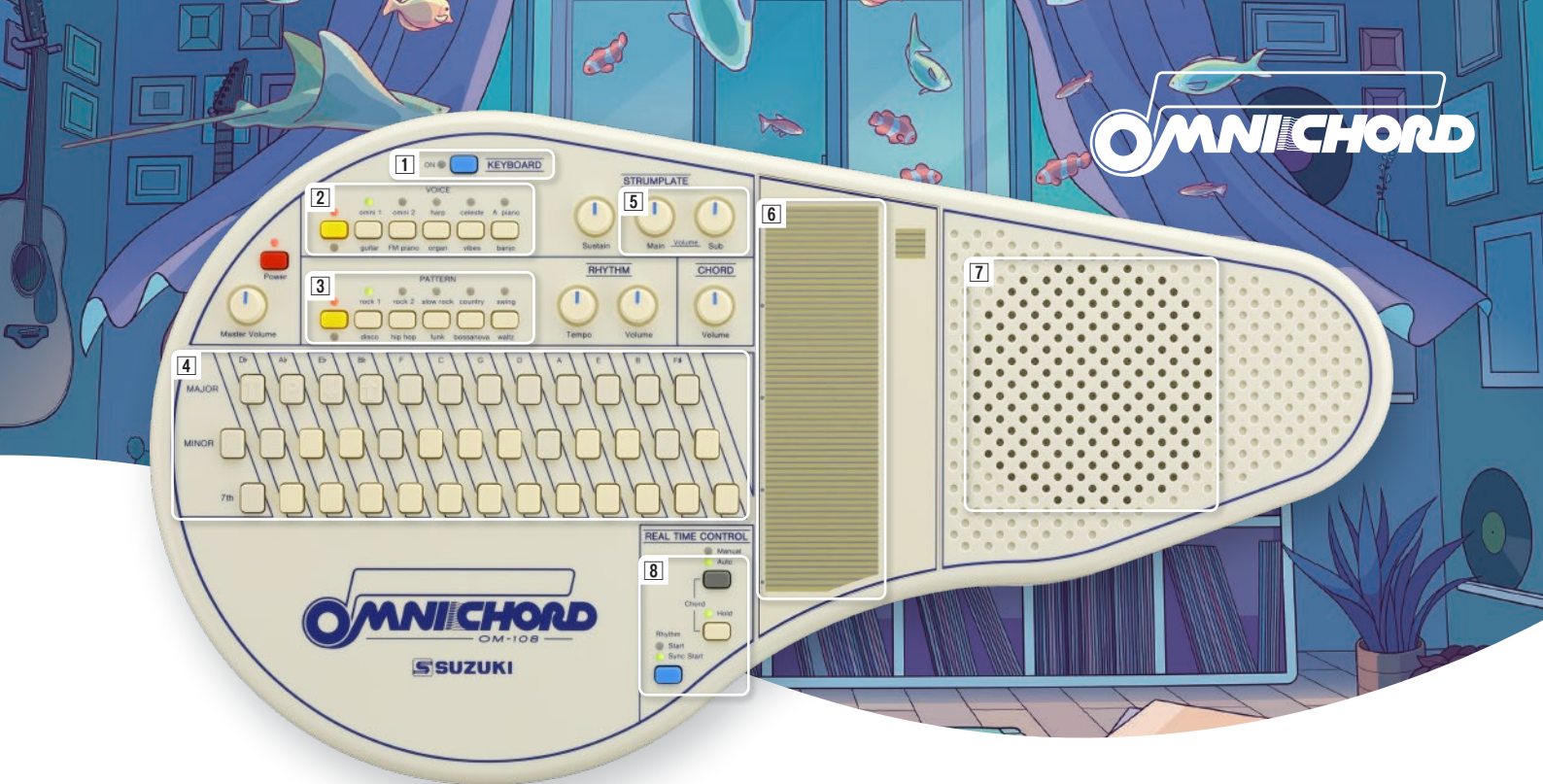
Strap length: 74-135cm / 29.13 - 53.15 in. (including metal fittings)
External dimensions: W49 x D26.5 x H10cm (19.29 x 10.43 x 3.94 in.) Weight: 540g(1.19lb)
A gig bag that can also store the AC adapter and a cable.
*Not suitable for earlier Omnichords.



Strap button OSB-108

2 strap buttons with screws.
By installing the strap buttons to the body of the OM-108, you can attach a commercially available guitar strap.





1 KEYBOARD

When this button is turned on, you can play selected chord buttons like a keyboard or drum pad. At the same time, a new feature has been added allowing drum pads to be assigned to the strumplate and auto-off touch pad.

2 VOICE

Equipped with 10 strumplate tones. In the reproduction, the tones of "omni1" and "omni2" are the same as those found on the OM-84, reproduced using analog circuitry. In addition, it is equipped with the electric piano "FM piano", which was all the rage in the 1980s, while carefully selecting "celeste", "harp", etc. from multiple models from the past. We carefully selected 10 tones which represent popular instruments from the past, and still resonate in today's music scene.

<Tone>

omni1/omni2/harp/celeste/A.piano/guitar/FM piano/organ/vibes/banjo

3 RHYTHM

Equipped with a selection of 10 rhythm patterns that correspond to a variety of music styles. For the first time on any Omnichord, the OM-108 features a trap beat (hip hop). In addition, although some rhythms share the same name as the past models, we have updated many, by incorporating a rhythm pattern that is more current.

<RHYTHM>

rock1/rock2/slow rock/country/swing/disco/hip hop/funk/bossanova/waltz

4 CHORD

You can play 108 chords just by pressing 1 to 3 chord buttons. "Sus4" and "add9" chords, which are often used in popular music, have been added to the OM-108.

Specifications

[Chord buttons]38 **[Chords]**major, minor, 7th, major7th, minor7th, augmented, diminished, suspended4th, add9th **[Voices]**10 tones (main, sub tones) / 4 octaves **[Rhythm Pattern]**10 patterns **[Control]**Master Volume, Chord Volume, Main Voice Volume, Sub Voice Volume, Sustain, Rhythm Volume, Tempo **[Button Controls]**Power, Chord, KEYBOARD ON/OFF, Voice Select, Rhythm Select, Chord-Manual/Auto, Chord Hold, Rhythm-Start / Sync Start **[Other Functions]**Instant OFF, Transpose, Octave Shift, ON/OFF SPEAKER, Master Tuning **[Speaker]**10cm **[Amplifier output]** 4.3W **[Jack]**DC inlet, LINE OUT (monaural standard), headphone output (Stereo mini), MIDI OUT **[Power Supply]**AC adapter, 8 AA alkaline or Ni-MH batteries (all sold separately) **[Power consumption]** 3.7W **[Continuous battery operation time]**Approximately 8 hours **[Measurement]**W45.7 x D25.0 x H5.18cm(17.99 x 9.84 x 2.04 in.) **[Weight]** 1.2kg(2.65lb) **[Accessories]**Melody keyboard overlayer

5 Main & Sub Voice Volume

Each of the 10 tones can be layered with a second tone: Main Voice and Sub Voice, and these can be controlled with individual knobs. For example, when "harp" is selected, "harp" is assigned to the Main Voice, and "Synth Strings" is assigned to the Sub Voice. Create your own sound by adjusting each volume control, thus changing the balance between the two voices. Each Main Voice is pre-assigned with a tone as a Sub Voice that will resonate beautifully when layered.

6 STRUMPLATE

The strumplate is one of the Omnichord's major features. If you slide your fingers on the strumplate while holding down a chord button, the chord and corresponding arpeggio will sound, similar to a harp, across four octaves.

7 SPEAKER

When connecting to an external speaker etc., you can turn on/off the sound produced by the speaker of the instrument. We listened to the request of Omnichord players who wanted to monitor their own sound during live performances.

8 REAL-TIME CONTROL

It integrates multiple functions that allow you to change the way you play chords and rhythms, such as playing at free tempo, adding bass accompaniment, or starting with a drum prelude.

9 MIDI OUT

You can send chords, strumplate, and drum performance information via MIDI OUT. Strumplate tones can be sent on two separate MIDI channels, allowing for the layering of tones using external MIDI sound sources.



SUZUKI SUZUKI MUSICAL INST. MFG. CO.,LTD.

in Europe

SUZUKI EUROPE LTD. www.suzukimusic.co.uk
12 Vermont Place, Tongwell, Milton Keynes, Buckinghamshire, MK15 8JA
Tel : +44-1908-511488 / E-mail : info@suzukimusic.co.uk

Other Country

SUZUKI CORPORATION suzukimusic-global.com
2-25-7, Ryoke, Chuo-ku, Hamamatsu, Shizuoka Pref. 430-0852 Japan
Tel : +81-53-460-3781 / Fax : +81-53-460-3783 / E-mail : suzukicorp@suzuki-music.co.jp